



# GAT MONTHLY MEMBERSHIP PROGRESS REPORT

Results as of: 2/28/2023

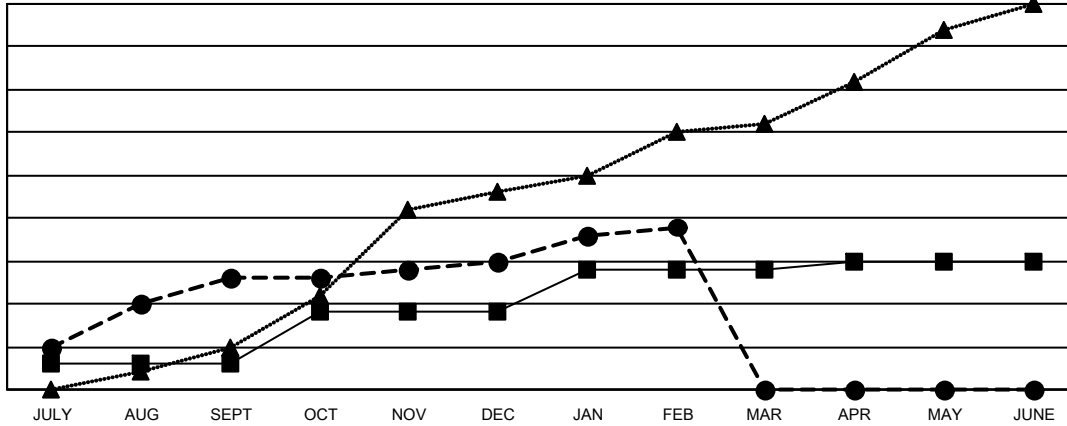
Multiple District 307

LOCATION: INDONESIA

Clubs			
RESULTS FOR 2022-2023			
QUARTER	NEW CLUB GOAL	NEW CLUBS	DROPPED CLUBS
JULY/AUG/SEPT	3	13	3
OCT/NOV/DEC	6	2	6
JAN/FEB/MAR	5	4	2
APR/MAY/JUNE	1	0	0

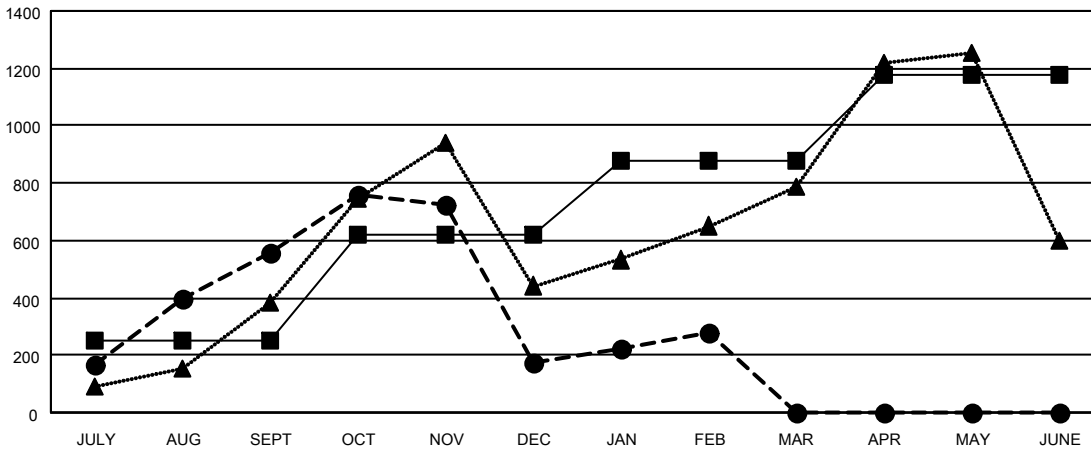
Members			
RESULTS FOR 2022-2023			
QUARTER	MEMBER GROWTH NET GOAL	MEMBER GROWTH ACTUAL	DROPPED MEMBERS ACTUAL (including transfers)
JULY/AUG/SEPT	250	940	195
OCT/NOV/DEC	370	449	817
JAN/FEB/MAR	260	237	116
APR/MAY/JUNE	300	0	0

GOALS AND ACTUAL NEW CLUBS CUMULATIVE



- - CURRENT YEAR GOALS FOR NEW CLUBS
- - CURRENT YEAR ACTUAL NEW CLUBS
- ▲ - LAST YEAR ACTUAL NEW CLUBS

GOALS AND ACTUAL MEMBERS CUMULATIVE



- - MEMBER GROWTH NET GOAL
- - MEMBER GROWTH ACTUAL
- ▲ - LAST YEAR MEMBERSHIP ACTUAL

DROPPED CLUBS: 11	
<b>DROPPED MEMBERS</b>	
DECEASED	21
CLUB CANCELLED	115
OTHER	992
<b>TOTAL</b>	<b>1,128</b>

212 CLUBS OF 395 ADDED 1 OR MORE NEW MEMBERS

[CLICK HERE FOR CUMULATIVE MEMBERSHIP DATA](#)

GENDER DISTRIBUTION	
MALE	5,007 (42.42%)
FEMALE	6,791 (57.54%)
NON BINARY	0 (0.00%)
PREFER NOT TO ANSWER	5 (0.04%)
<b>TOTAL FAMILY UNIT MEMBERS</b>	<b>3,090</b>
<b>FAMILY MEMBERS PAYING HALF DUES</b>	<b>1,798</b>